

NOT PROTECTIVELY MARKED

Neighbourhood Profile Update Cambridge City South Neighbourhood



March 2012



Steve Poppitt, Area Policing Inspector

Lynda Kilkelly, Safer Communities Manager, Cambridge City Council



CONTENTS

| | | |
|----------|--|-----------|
| 1 | INTRODUCTION | 2 |
| | Aim | 2 |
| | Methodology | |
| 2 | PREVIOUS PRIORITIES & ENGAGEMENT ACTIVITY | 3 |
| | Previous Priorities | 3 |
| | Engagement Activity | 6 |
| 3 | EMERGING ISSUES | 6 |
| 4 | CURRENT CRIME AND INCIDENT LEVELS | 10 |
| 5 | RECOMMENDATIONS | 13 |

1. INTRODUCTION

Aim

The aim of the Neighbourhood profile update is to provide an overview of action taken since the last reporting period, identify ongoing and emerging crime and disorder issues, and provide recommendations for future priorities and activity in order to facilitate effective policing and partnership working in the area.

The document should be used to inform multi-agency neighbourhood panel meetings and neighbourhood policing teams, so that issues can be identified, effectively prioritised and partnership problem solving activity undertaken.

Methodology

This document was produced using the following data sources:

- Crime and Incident data from Oct 11 – December 11 and as a comparison data from February 11 – May 11 and Oct 10 – December 10.
- Information from the Neighbourhood Policing teams February 2012.
- Environmental data from Cambridge City Council for the period October 2011 – January 2012, compared with the same period the previous year.

2. PREVIOUS PRIORITIES & ENGAGEMENT ACTIVITY

Previous Priorities

At the neighbourhood panel meeting on 7th November 2011, the following issues were adopted as priorities. The tables below summarise action taken and the current situation regarding the priorities that were set:

| Youth Anti-Social Behaviour at High Street, Cherry Hinton | |
|--|---|
| Objective | <ul style="list-style-type: none"> □ To identify and disperse any problematic or anti-social groups of youths in the vicinity of the High Street. This was extended to include Bridewell Road, Mallets Road and the Recreation Ground. □ To provide immediate respite for businesses and residents adversely affected by anti-social congregation. |
| Action Taken | <p>An ASB street surgery organised by the Safer Communities Section was held in Cherry Hinton High Street on Thursday 17 November. City Council ASB officers, PCSO's and Fire Officers spoke to members of the public about their concerns. Residents were also visited at home in order to seek their views. Information was also given out about how to report ASB and to whom. Residents reported concerns with young people congregating near the shops and rowdy behaviour.</p> <p>The area was also discussed at the multi agency City ASB Task Group and there has been a lot of youth work going on in the local area with young people. A number of young people in this area had also been identified as targeting some local residents and these young people received warning letters from the council about their behaviour and since then these reports have decreased.</p> <p>Approximately 76 hours of duty time was spent on this issue during the period. Some congregation has been witnessed and close liaison maintained with Tesco stores as the main focal point of the groups. 11 incidents were reported during the period.</p> <p>As might be expected due to the cold weather incidents of ASB were reduced during the last few months. There were some positive results directly attributable to the increased patrols namely two alcohol confiscations from a group of underage persons and a cannabis seizure, but these all occurred during the winter holiday period. In the last two months, the 63 hours of extra patrolling has produced a lot of positive community engagement with local youths and residents but little else.</p> |

| | |
|-------------------------------|---|
| Current Situation | The situation is now much reduced compared to the first reporting period. In the last 2 months there have been no calls from the Tesco on the High Street to report any problems. Current police activity is now almost exclusively positive engagement with little opportunity for enforcement action presenting itself. Although there will always be a small amount of ASB associated with any High Street area it is a logical conclusion that this could be managed by normal police business. |
| Continue or Discharge? | It is recommended that the committee consider discharging this priority for at least one reporting period. Frequent patrols of the areas listed above are now “business as usual” for the staff assigned to the Cherry Hinton area as well as the other supporting staff in the rest of the South Area. |

| | |
|---|---|
| Anti-Social and Off-Road use of Mopeds - Cherry Hinton and Queen Edith's | |
| Objective | <ul style="list-style-type: none"> □ To identify and engage offenders and seek to reduce incidences of anti-social use. □ Where necessary to make full use of powers under Sec.59 of the Police Reform Act to deny repeat and more serious offenders the use of the road through confiscation of vehicles. |
| Action Taken | <p>Approximately 60 hours of dedicated patrols were conducted in the routes and location identified as problematic in addition to local staff paying attention to the area at key times during and in the course of routine duties. This is in addition to approximately 57 hours spent in the City East area working alongside East team colleagues to tackle similar behaviour by the same individuals there.</p> <p>Due to the difficult road conditions over the winter months a significant reduction in this activity was expected. The additional patrols in the South Area resulted in no opportunities for enforcement, this compares to the 2 vehicles seized and a single s59 warning given in the East Area. A few pieces of advice have been given to youths who were not using their vehicles in an anti-social manner advising them that moped related ASB would not be tolerated.</p> |

| | |
|-------------------------------|---|
| Current Situation | The situation at the moment regarding anti-social vehicle use appears to be under control. Youths using the vehicles in an anti-social way have either been displaced to other areas, this seems unlikely given the low activity in the East Area, or have had their vehicles seized on at least one occasion and are unwilling to have the experience repeated. Currently this priority has become “business as usual” for staff patrolling the Cherry Hinton and Queen Edith’s areas. |
| Continue or Discharge? | It is requested that the committee consider discharging this priority and the situation is monitored to see if an increase occurs due to the improving weather. |

| Anti-Social Parking outside Schools in Queen Edith’s | |
|---|--|
| Objective | <ul style="list-style-type: none"> □ Reduce the number of complaints of anti-social parking and driving outside Queen Edith’s Primary school and Morley Memorial School. |
| Action Taken | <p>Approximately 12 hours of high visibility patrols have been carried out outside the Queen Edith’s Primary and Morley Memorial Schools at peak dropping off and picking up times. During this period 15 drivers have been advised regarding parking near junctions, parking in a manner likely to obstruct the use of vehicles by other parents and residents or likely to cause serious inconvenience to other road users.</p> <p>The strategy so far has been to educate and advise road users of their legal obligations as well as the importance of using the road with consideration to the needs of local residents. Road users have also been advised that should complaints continue to be received enforcement action will commence later in the term.</p> <p>One of the principle problems seems to relate to a number of drivers that appeared to have no understanding regarding road legislation relating to parking near schools and junctions. Both schools have contributed to the activity with banners being made and hung on the railings outside the schools asking parents to park safely and considerately. The fire service has undertaken a leaflet campaign, posting leaflets on vehicles advising them of the consequences of blocking access for fire engines.</p> |
| Current Situation | Local residents near to both schools, as well as school staff, have commented to staff carrying out these patrols how much they appreciate their attempts to resolve the situation. Currently there has been a reduction in complaints as well as a general improvement in the quality of parking observed by officers. |

| | |
|-------------------------------|---|
| Continue or Discharge? | The next logical step is to move from education to enforcement. Therefore it is now up to the committee to decide if they wish to monitor the situation to see if the current level of consideration is maintained without enforcement or ask the police to engage in enforcement activity for the next reporting period. |
|-------------------------------|---|

Engagement Activity

A Street Surgery with members of the City Council ASB team was carried out in the High Street in Cherry Hinton on the 17th November.

Engagement events permitting members of the public to meet the City South and other Cambridge City Neighbourhood Policing Teams are listed on the Constabulary's website. They include monthly surgeries at Waitrose Trumpington, Addenbrooke's Hospital Concourse and Cherry Hinton Village Centre. Regular E-Cops messages are sent at an average of one a week to all wards.

For more private matters, officers will be happy to arrange a meeting at your convenience or discuss matters via telephone. For further details please visit www.cambs.police.uk and look for the "My Neighbourhood" link or call 101.

3. EMERGING ISSUES

Neighbourhood trends

Total crime in City South has decreased compared to the previous period (332 offences vs. 361 offences) and compared to the same period last year (386 offences).

ASB figures have decreased compared to the previous period (218 Incidents vs. 290 Incidents) and also compared to the same period last year (278 Incidents).

Trumpington *Crime*

- Total crime levels in Trumpington have increased from 162 offences in the previous period to 186 offences in this period. This is however a decrease compared to the same period last year (282 offences).
- In 23 of the offences during this period an offender was arrested and the crime was detected, which is approximately 12%.
- Violent crime offences have increased slightly compared to the previous period (from 13 to 22 offences) but decreased compared to the 30 offences in the same period last year.
- The majority of offences in Trumpington ward were theft offences.

Cycle theft is the most common offence type followed by theft from vehicle. Levels of theft have remained stable compared to the previous period.

- The number of criminal damage offences has remained stable with 17 crimes in this and the previous period.

ASB

- There were 72 ASB incidents in this period compared to 99 incidents in the previous period and 95 incidents in the same period last year.
- There were 14 incidents in Gonville Place that relate to violent, threatening and drunken behaviour.
- There were 8 incidents in Hills Road that relate to begging and street drinking.

Environmental Services Data

- Between October 2011 and January 2012, there were 5 reports of abandoned vehicles in the ward compared with 2 during the same period the previous year. This included 2 vehicles, which were not on site following inspection and 1, which was subsequently claimed by the owner. There were no specific hotspots during either period.
- Between October 2011 month and January 2012, there were 26 reports of fly tipping in the ward compared with 37 during the same period the previous year. There was sufficient evidence to issue 1 formal warning letter to a domestic offender. Anstey Way (5) and Monkswell (3) were the main hotspots during the current reporting period. The offences at Anstey Way accounted for the formal warning letter being sent. Bentinck Street (7), George IV Street (6), Anstey Way (5) and Hills Road were the main hotspots during the previous year.
- Between October 2011 and January 2012, 14 derelict cycles were dealt with compared with 14 during the same period the previous year. Brooklands Avenue (4) was the hotspot during the current reporting period. There were no specific hotspots during the previous year.
- Between October 2011 and January 2012, there were no needles reported compared with 3 during the same period the previous year. During the previous reporting period the needles were removed from Union Road.

Cherry Hinton Crime

- There were 126 offences in this period compared to 196 offences in the previous period. This is only a slight increase from 122 offences in the same period last year.
- 27 of the crimes were detected which is approximately 21% of the offences.
- There were no burglaries (non dwelling) in this period compared to 7 offences in the previous period.
- Theft from vehicle crimes have decreased from 30 offences in the last period to only 4 in this period. This was adopted as a priority for the division and since that time a reduction in offences has occurred.

ASB

- ASB incidents have decreased compared to the previous period (83 offences vs. 109 offences) and also decreased compared to the same period last year (98 offences).
- There were 12 reported incidents in the High Street, Cherry Hinton. The calls for service included reports of groups of teenage youths causing a nuisance and throwing missiles.

Environmental Services Data

- Between October 2011 and January 2012, there were 7 reports of abandoned vehicles in the ward compared with 10 during the same period the previous year. This included 2 vehicles, which were not on site following inspection and 4, which were subsequently claimed by their owners. There were no specific hotspots during either period.
- Between October 2011 and January 2012, there were 60 reports of fly tipping in the ward compared with 26 during the same period the previous year. There was sufficient evidence to issue 6 formal warning letters to domestic offenders. In addition, 2 verbal warnings were issued and waste transfer documentation was requested from both trade offenders. Colville Road (21), Cherry Hinton Road (6), High Street Cherry Hinton (6), Fishers Lane (4) and Fulbourn Road (4) were the main hotspots during the current reporting period. The offences at Colville Road accounted for 4 of the formal warning letters being sent. Fulbourn Road (5) and Colville Road (4) were the main hotspots during the previous year.
- Between October 2011 and January 2012, 7 derelict cycles were dealt with compared with 14 during the same period the previous year. There were no specific hotspots during the current reporting period. Headington Drive (3) was the main hotspot during the previous year.
- Between October 2011 and January 2012, 2 needles were reported compared with 4 during the same period the previous year. The 2 needles were removed from Cherry Hinton Hall and Fulbourn Road. During the previous reporting period 3 needles were removed from Cherry Hinton Road and the other was removed from Railway Street.

**Queen Edith's
Crime**

- Offence levels in Queen Edith have increased compared to the last period (202 offences vs. 158 offences) but have decreased compared to the same period last year (228 Offences).
- 14% of those crimes were detected (29 offences).
- There was an increase in Violent Crime offences, with 31 in this period compared to 23 in the last period and 21 in the same period last year. 7 of the offences were at Addenbrooke's Hospital. Other offences occurred in Holbrook Road, Godwin Way and Wulstan Way.
- There were 31 cycle thefts, compared to 24 in the previous period and 39 in the same period last year. 14 of the cycle thefts this period occurred on Hills Road, with 12 of those offences occurring at Addenbrooke's Hospital.

- There were 10 burglaries (non dwellings) in this period. This is an increase from 1 offence in the previous period. The offences were shed burglaries that occurred in Gunhild Way, Spalding Way and Queen Edith's Way.

ASB

- There were 63 ASB incidents in this period compared to 82 incidents in the previous period and 85 incidents in the same period last year.
- Approximately a half of the calls for service were for incidents in Hills Road. Of those 18 incidents related to violent, drunk and abusive persons at the Hospital. The remaining incidents relate to violent, drunken and nuisance behaviour.

Environmental Services Data

- Between October 2011 and January 2012, there were 4 reports of abandoned vehicles in the ward compared with 10 during the same period the previous year. This included 2 vehicles, which were not on site following inspection and 1, which was subsequently claimed by the owner. 1 additional vehicle is also currently pending further investigation. There were no specific hotspots during the current reporting period. Rathmore Road (3) was the hotspot for the same period the previous year.
- Between October 2011 and January 2012, there were 9 reports of fly tipping in the ward compared with 9 during the same period the previous year. 2 verbal warnings were issued and waste transfer documentation was requested from both trade offenders. Wulfstan Way (5) was the hotspot during the current reporting period. The offences at Wulfstan Way accounted for 2 of the formal warning letters being sent. There were no specific hotspots during the previous year.
- Between October 2011 and January 2012, 2 derelict cycles were dealt with compared with 19 during the same period the previous year. There were no specific hotspots during the current reporting period. Babraham Road (6) was the hotspot during the previous year.
- Between October 2011 and January 2012, there were no reports of needles in either reporting periods.

Please Note

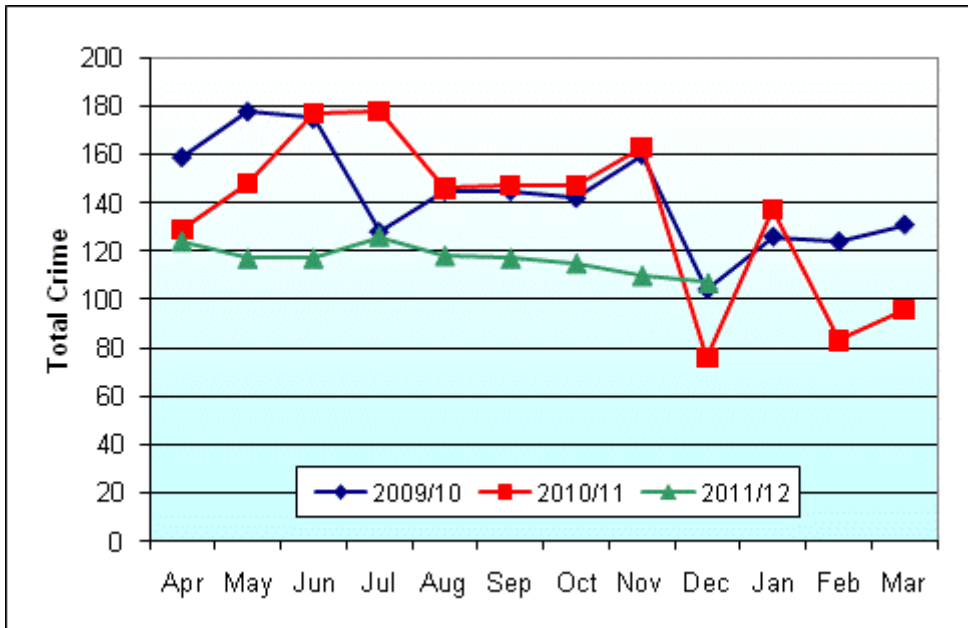
The above commentary on crime and incident trends relates to police data produced up to the end of December 2011 as this report was prepared prior to January's 2012 data being available.

January's figures show there were 140 crimes recorded during the month, which is an increase compared to the previous month (107). This follows a similar trend to previous years. See below.

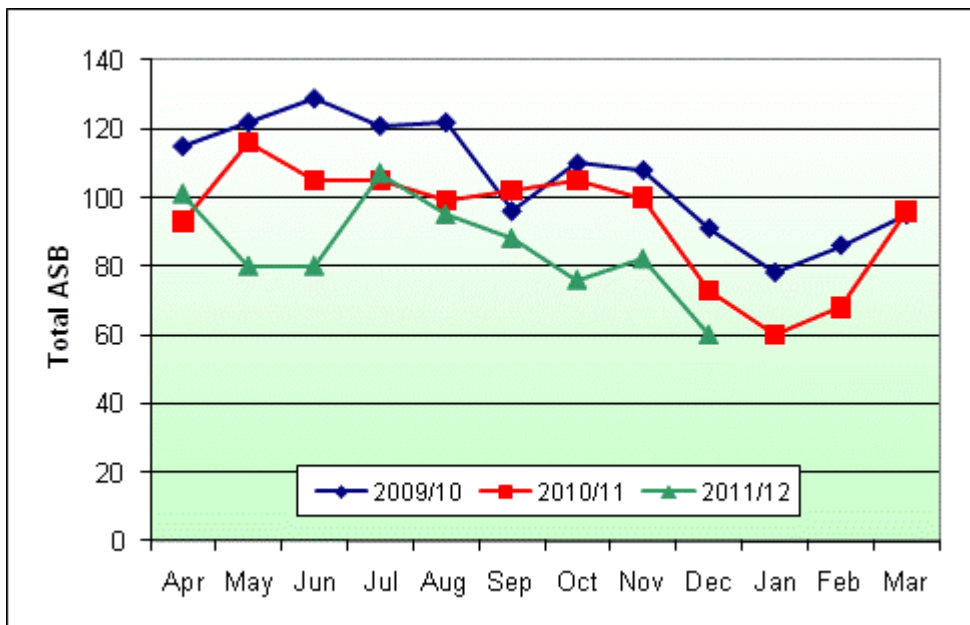
70 reports of ASB were recorded in January.

4. CURRENT CRIME AND INCIDENT LEVELS

Total Crime



Total ASB



Current Crime and Incident Levels in Neighbourhood, by Ward

| | | | Dwell. Burg. | Other Burg. | Violent Crime | Robbery | Theft of Vehicle | Theft from Veh. | Cycle Theft | Theft from Shop | Criminal Damage | Other Crime | TOTAL CRIME | TOTAL ASB |
|--------------|----------------------|-------------------------|-----------------|----------------|------------------|---------|---------------------|-----------------------|----------------|-----------------------|--------------------|----------------|----------------|--------------|
| N'Hod | City South | <i>Oct 11 – Dec 11</i> | 19 | 16 | 70 | 1 | 3 | 21 | 68 | 5 | 50 | 79 | 332 | 218 |
| | | <i>July 11 – Sep 11</i> | 15 | 16 | 66 | 3 | 7 | 43 | 61 | 5 | 46 | 99 | 361 | 290 |
| | | <i>Oct 10 – Dec 10</i> | 33 | 21 | 73 | 9 | 8 | 35 | 91 | 5 | 41 | 70 | 386 | 278 |
| Wards | Trumpington | <i>Oct 11 – Dec 11</i> | 4 | 6 | 22 | 0 | 2 | 10 | 28 | 4 | 17 | 93 | 186 | 72 |
| | | <i>July 11 – Sep 11</i> | 4 | 8 | 13 | 1 | 3 | 6 | 27 | 2 | 17 | 81 | 162 | 99 |
| | | <i>Oct 10 – Dec 10</i> | 8 | 13 | 30 | 2 | 1 | 18 | 45 | 2 | 22 | 141 | 282 | 95 |
| | Cherry Hinton | <i>Oct 11 – Dec 11</i> | 7 | 0 | 24 | 1 | 1 | 4 | 9 | 1 | 16 | 63 | 126 | 83 |
| | | <i>July 11 – Sep 11</i> | 4 | 7 | 23 | 0 | 2 | 30 | 10 | 3 | 19 | 98 | 196 | 109 |
| | | <i>Oct 10 – Dec 10</i> | 6 | 1 | 22 | 7 | 5 | 2 | 7 | 3 | 8 | 61 | 122 | 98 |
| | Queen Edith | <i>Oct 11 – Dec 11</i> | 8 | 10 | 31 | 1 | 0 | 7 | 31 | 0 | 13 | 101 | 202 | 63 |
| | | <i>July 11 – Sep 11</i> | 7 | 1 | 23 | 1 | 2 | 7 | 24 | 0 | 14 | 79 | 158 | 82 |
| | | <i>Oct 10 – Dec 10</i> | 19 | 7 | 21 | 0 | 2 | 15 | 39 | 0 | 11 | 114 | 228 | 85 |

Top 10¹ ASB Incident Types in the City South Neighbourhood, by Ward

Please Note

Incident levels for each of the wards may not be consistent with the official figures that will be published by the Force and Home Office. This is because the data system used to draw the level of detail needed for the ASB type breakdown for this report may not contain precise locations due to the way incidents are reported e.g. ASB reported where ward boundaries lie could initially be recorded in the neighbouring ward but subsequently corrected.

The figures should only be used as a guide and not regarded as official statistics for publication.

| | | | ROWDY/NUISANCE | MALICIOUS/NUISANCE | VIOLENCE | ABANDONED VEHICLE | ROAD RELATED | NEIGHBOUR DISPUTE | VEHICLE NUISANCE | NOISE COMPLAINT | BEGGING | Grand Total |
|--------------|----------------------|------------------------|----------------|--------------------|----------|-------------------|--------------|-------------------|------------------|-----------------|---------|-------------|
| N'd | City South | <i>Oct 11 – Dec 11</i> | 129 | 19 | 19 | 10 | 7 | 6 | 6 | 5 | 3 | 204 |
| | | <i>Jun 11 – Sep 11</i> | 160 | 20 | 10 | 15 | 5 | 6 | 20 | 24 | 3 | 263 |
| Wards | Trumpington | <i>Oct 11 – Dec 11</i> | 35 | 7 | 9 | 3 | 2 | 2 | 1 | 4 | 3 | 66 |
| | | <i>Jun 11 – Sep 11</i> | 53 | 7 | 3 | 6 | 2 | 4 | 4 | 7 | 3 | 89 |
| | Cherry Hinton | <i>Oct 11 – Dec 11</i> | 59 | 6 | 5 | 2 | 2 | 3 | 1 | 0 | 0 | 78 |
| | | <i>Jun 11 – Sep 11</i> | 65 | 7 | 5 | 5 | 0 | 1 | 9 | 8 | 0 | 100 |
| | Queen Edith | <i>Oct 11 – Dec 11</i> | 35 | 6 | 5 | 5 | 3 | 1 | 4 | 1 | 0 | 60 |
| | | <i>Jun 11 – Sep 11</i> | 42 | 6 | 2 | 4 | 3 | 1 | 7 | 9 | 0 | 74 |

¹ The table shows top 10 different call types (final call types).

5. Recommendations

The following Neighbourhood Priorities are recommended for consideration:

- Continue with work to address parking issues outside Queen Edith's and Morley Memorial schools.